

Remark: margin
top: 5.08 cm (2-inch)
left & right: 3.17 cm (1.25-inch)
bottom: 3.81 cm (1.5-inch)

TITLE (*in capital letter*)

Ms./Mr. xxxxxxxx xxxxxxxxxxxxxx

An Independent Study
Submitted in Partial Fulfillment of the Requirements
for the Degree of Master of Management
in International Business
(International Program)
Faculty of Commerce and Accountancy
Chulalongkorn University
Academic Year 2022

Remark: margin
top: 5.08 cm (2-inch)
left & right: 3.17 cm (1.25-inch)
bottom: 3.81 cm (1.5-inch)

Title	Topic (in English)
By	Student's Name (in English)
Field of Study	International Business Management
Advisor	Academic Title & Fullname (in English)
Academic Year	2022

Accepted by Master of Management Program in International Business
(International Program), Faculty of Commerce and Accountancy, Chulalongkorn
University in Partial Fulfillment of the Requirements for the Master Degree

COMMITTEE

Don't input any page number

Advisor
(Academic Title & Fullname (in English))

Director, Master of Management Program
(Assistant Professor Thira Chavarnakul, Ph.D.)

ชื่อ นามสกุล-นิสิต (ภาษาไทย)

หัวข้อการศึกษา (ภาษาไทย)

IS topic (in English)

อาจารย์ที่ปรึกษา

ชื่อเต็ม พร้อม ตำแหน่งทางวิชาการ (ภาษาไทย)

บทคัดย่อ

ตัวอย่าง ตัวอย่าง ตัวอย่าง ตัวอย่าง ตัวอย่าง ตัวอย่าง ตัวอย่าง ตัวอย่าง ตัวอย่าง ตัวอย่าง ตัวอย่าง ตัวอย่าง
ตัวอย่าง ตัวอย่าง ตัวอย่าง ตัวอย่าง ตัวอย่าง ตัวอย่าง ตัวอย่าง ตัวอย่าง ตัวอย่าง ตัวอย่าง ตัวอย่าง ตัวอย่าง
ตัวอย่าง ตัวอย่าง ตัวอย่าง ตัวอย่าง ตัวอย่าง ตัวอย่าง ตัวอย่าง ตัวอย่าง ตัวอย่าง ตัวอย่าง ตัวอย่าง ตัวอย่าง

FORMAT

- Title “บทคัดย่อ”

- Font type: Angsana New; Font size: 16; Font style: **Bold**; Alignment: Centered

- Content:

- Font type: Angsana New; Font size: 14; Font style: Regular; Alignment: Centered
- Page margin: Left – 1.5 inch; Right, top & bottom – 1 inch



- Paragraph: Justified
- Paragraph Line Spacing: Single space or 1.5 lines
(depending on the appropriateness.)



- Page number at the right bottom of the page: ROMAN page number
(i, ii, iii, iv, v and so on)

- Page limit: 1 page ONLY. The space can be adjusted according to the appropriateness.

กรุณาเซ็นชื่อเป็นภาษาไทย

สาขาวิชา การจัดการธุรกิจระหว่างประเทศ

Double Spacing

ปีการศึกษา 2565

ลายมือชื่อนิสิต

ลายมือชื่ออาจารย์ที่ปรึกษา

Student's Name (in English)

Topic (in English)

Advisor

Academic Title & Fullname (in English)

Abstract

This is the sample of English abstract. This is the sample of English abstract. This is the sample of English abstract. This is the sample of English abstract. This is the sample of English abstract. This is the sample of English abstract. This is the sample of English abstract. This is the sample of English abstract. This is the sample of English abstract. This is the sample of English abstract.

FORMAT

- Title “**Abstract**”

- Font type: Times New Roman; Font size: 12; Font style: **Bold**; Alignment: Centered

- Content:

- Font type: Times New Roman; Font size: 12; Font style: Regular; Alignment: Centered
- Page margin: Left – 1.5 inch; Right, top & bottom – 1 inch



- Paragraph: Justified
- Paragraph Line Spacing: Single space or 1.5 lines (depending on the appropriateness.)



- Page number at the right bottom of the page: ROMAN page number (i, ii, iii, iv, v and so on)

- Page limit: 1 page ONLY. The space can be adjusted according to the appropriateness.

กรุณาเซ็นชื่อเป็นภาษาอังกฤษ

Major: International Business Management

Student Signature_____

Academic Year: 2022

Advisor Signature_____

Acknowledgements

[illegible]

FORMAT

- Title “**Acknowledgement**”
 - Font type: Times New Roman; Font size: 15; Font style: **Bold**; Alignment: Centered
- Content:
 - Font type: Times New Roman; Font size: 12; Font style: Regular; Alignment: Centered
 - Page margin: Left – 1.5 inch; Right, top & bottom – 1 inch
 - Paragraph: Justified
 - Paragraph Line Spacing: Single space or 1.5 lines (depending on the appropriateness.)
- Page number at the right bottom of the page: ROMAN page number (i, ii, iii, iv, v and so on)
- Page limit: 1 page ONLY. The space can be adjusted according to the appropriateness.
- **Don’t** put your name at the end of the page.

Contents

- Title “**Contents**”
 - Font type: Times New Roman; Font size: 15; Font style: **Bold**; Alignment: Centered
 - Paragraph Line Spacing: 1.5 lines

- Heading “บทคัดย่อ, **Abstract, Acknowledgement, Contents, List of Tables, List of Figures, Chapter 1 – 5, Appendix, Background of student, and Reference**”
 - Font type: Times New Roman; Font size: 14; Font style: **Bold**; Alignment: Justified
 - Paragraph Line Spacing: 1.5 lines

- Sub-topic of each chapter:
 - Font type: Times New Roman; Font size: 12; Font style: Regular; Alignment: Justified

- Page margin: Left – 1.5 inch; Right, top & bottom – 1 inch

- Paragraph Line Spacing: Single space or 1.5 lines (depending on the appropriateness.)

บทคัดย่อ.....	i
Abstract.....	ii
Acknowledgements	iii
Contents	iv
List of Tables	vi
List of Figures	vii
Chapter 1 Introduction	1
Rationale for the Study	1
Objectives of the Study	2
Scope of the Study	2
Methodology of the Study	2
Contribution of the Study	2
Time frame of the study	2
Chapter 2 Literature Review	3
Heading 2	3

Heading 3	3
Heading 3	3
Heading 2	3
Heading 3	3
Heading 3	3
Chapter 3 Methodology.....	4
Heading 2	4
Heading 3	4
Heading 2	4
Heading 3	4
Chapter 4 Research Finding	5
Heading 2	5
Heading 3	5
Heading 2	5
Heading 3	5
Heading 3	5
Chapter 5 Conclusion and Recommendation	7
Heading 2	7
Heading 3	7
Heading 2	7
Heading 3	7
Appendix 1 Title of the Appendix 1	8
Appendix 2 Title of the Appendix 2	9
Background of the student.....	10
Reference	11

List of Tables

- Title “**List of Tables**”
 - Font type: Times New Roman; Font size: 15; Font style: **Bold**;
Alignment: Centered
 - Paragraph Line Spacing: 1.5 lines
- Page margin: Left – 1.5 inch; Right, top & bottom – 1 inch

Table 2-1	3
Table 2-2	3
Table 3-1	4
Table 4-1	5

List of Figures

- Title “**List of Figures**”
 - Font type: Times New Roman; Font size: 15; Font style: **Bold**;
Alignment: Centered
 - Paragraph Line Spacing: 1.5 lines
- Page margin: Left – 1.5 inch; Right, top & bottom – 1 inch

Figure 4-16

Introduction

FORMAT (For the whole content from Chapter 1 to the last Chapter)

- **Heading 1** “Chapter x and the name of Chapter”

- Font type: **Times New Roman**; Font size: 15; Font style: **Bold**; Alignment: Centered
- Paragraph Line Spacing: 1.5 lines

- **Heading 2:**

- Font type: **Times New Roman**; Font size: 14; Font style: Regular; Alignment: Justified
- Paragraph Line Spacing: 1.5 lines

- Heading 3:

- Font type: **Times New Roman**; Font size: 13; Font style: Regular; Alignment: Justified
- Paragraph Line Spacing: 1.5 lines

- Content:

- Font type: Times New Roman; Font size: 12; Font style: Regular; Alignment: Justified
- Paragraph Line Spacing: 1.5 lines

- Content (in Tables):

- Font type: Times New Roman; Font size: 10 or 11; Font style: Regular
- Alignment: Left (Table properties -> Table -> Alignment -> Left)
- Paragraph Line Spacing: Single space

- Content (in Figures):

- Font type: Times New Roman; Font size: 10 or 11; Font style: Regular
- Alignment: Center
- Paragraph Line Spacing: Single space

- Page margin: Left – 1.5 inch; Right, top & bottom – 1 inch

- Page number:

- Font type: Times New Roman; Font size: 10 or 11; Font style: Regular
- Arabic page number (1, 2, 3 and so on) at the bottom of the page;
Alignment: Left

Rationale for the Study

This is the sample of the content. This is the sample of the content. This is the
sample of the content. This is the sample of the content. This is the sample of the content.
This is the sample of the content. This is the sample of the content. This is the sample
of the content. This is the sample of the content. This is the sample of the content. This

is the sample of the content. This is the sample of the content. This is the sample of the content. This is the sample of the content. This is the sample of the content. This is the sample of the content.

Objectives of the Study

The objectives of this independent study are

- 1. To explore xxxxxx
- 2. To examine xxxxxxxxxxxxxx
- 3. To understand xxxxxxxxxxxx

Scope of the Study

This is the sample of the content. This is the sample of the content. This is the sample of the content. This is the sample of the content. This is the sample of the content. This is the sample of the content. This is the sample of the content. This is the sample of the content. This is the sample of the content. This is the sample of the content. This is the sample of the content. This is the sample of the content.



Methodology of the Study

- 1. This is the sample of the content. This is the sample of the content.
- 2. This is the sample of the content. This is the sample of the content.
- 3. This is the sample of the content. This is the sample of the content.

Contribution of the Study

- 1. This is the sample of the content. This is the sample of the content.
- 2. This is the sample of the content. This is the sample of the content.
- 3. This is the sample of the content. This is the sample of the content.

Time frame of the study

Activities	July				August				September				October				November				December				January			
	1	2	3	4	1	2	3	4	1	2	3	4	1	2	3	4	1	2	3	4	1	2	3	4	1	2	3	4
				X																								
																												
																					X							
																												
																								X				

Chapter 2

Literature Review

Heading 2

Heading 3

This is the sample of the content. This is the sample of the content. This is the sample of the content. This is the sample of the content. This is the sample of the content. This is the sample of the content.

Heading 3

This is the sample of the content. This is the sample of the content. This is the sample of the content. This is the sample of the content. This is the sample of the content. This is the sample of the content.

Heading 2

Heading 3

This is the sample of the content. This is the sample of the content. This is the sample of the content. This is the sample of the content. This is the sample of the content. This is the sample of the content.

Heading 3

This is the sample of the content. This is the sample of the content. This is the sample of the content. This is the sample of the content. This is the sample of the content. This is the sample of the content.

sample	sample	sample	sample
sample	sample	sample	sample
sample	sample	sample	sample

Table 2-1

sample	sample	sample	sample
sample	sample	sample	sample
sample	sample	sample	sample

Table 2-2

Chapter 3

Methodology

Heading 2

This is the sample of the content. This is the sample of the content. This is the sample of the content. This is the sample of the content. This is the sample of the content. This is the sample of the content.

Heading 3

This is the sample of the content. This is the sample of the content. This is the sample of the content. This is the sample of the content. This is the sample of the content. This is the sample of the content.

Heading 2

This is the sample of the content. This is the sample of the content. This is the sample of the content. This is the sample of the content. This is the sample of the content. This is the sample of the content.

Heading 3

This is the sample of the content. This is the sample of the content. This is the sample of the content. This is the sample of the content. This is the sample of the content. This is the sample of the content.

sample	sample	sample	sample
sample	sample	sample	sample
sample	sample	sample	sample
sample	sample	sample	sample

Table 3-1

Chapter 4

Research Finding

Heading 2

This is the sample of the content. This is the sample of the content. This is the sample of the content. This is the sample of the content. This is the sample of the content. This is the sample of the content.

Heading 3

This is the sample of the content. This is the sample of the content. This is the sample of the content. This is the sample of the content. This is the sample of the content. This is the sample of the content.

Heading 2

This is the sample of the content. This is the sample of the content. This is the sample of the content. This is the sample of the content. This is the sample of the content. This is the sample of the content.

Heading 3

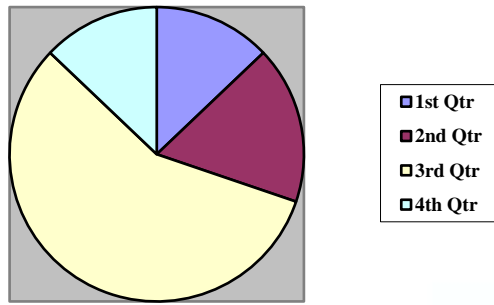
This is the sample of the content. This is the sample of the content. This is the sample of the content. This is the sample of the content. This is the sample of the content. This is the sample of the content.

sample	sample	sample	sample
sample	sample	sample	sample
sample	sample	sample	sample
sample	sample	sample	sample

Table 4-1

Heading 3

This is the sample of the content. This is the sample of the content. This is the sample of the content. This is the sample of the content. This is the sample of the content. This is the sample of the content.



○

Figure 4-1

Chapter 5

Conclusion and Recommendation

Heading 2

This is the sample of the content. This is the sample of the content. This is the sample of the content. This is the sample of the content. This is the sample of the content. This is the sample of the content.

Heading 3

This is the sample of the content. This is the sample of the content. This is the sample of the content. This is the sample of the content. This is the sample of the content. This is the sample of the content.

Heading 2

This is the sample of the content. This is the sample of the content. This is the sample of the content. This is the sample of the content. This is the sample of the content. This is the sample of the content.

Heading 3

This is the sample of the content. This is the sample of the content. This is the sample of the content. This is the sample of the content. This is the sample of the content. This is the sample of the content.

Appendix 1

Title of the Appendix 1

- Title “**Appendix 1 Title of the Appendix 1**”
 - Font type: Times New Roman; Font size: 15; Font style: **Bold**;
Alignment: Centered
 - Paragraph Line Spacing: 1.5 lines

- Heading “title of the appendix”
 - Font type: Times New Roman; Font size: 12; Font style: **Bold**;
Alignment: Right
 - Paragraph Line Spacing: 1.5 lines

- Page number:
 - Font type: Times New Roman; Font size: 10 or 11; Font style: Regular
 - Arabic page number (1, 2, 3 and so on) at the bottom of the page;
Alignment: Left

- Page margin: Left – 1.5 inch; Right, top & bottom – 1 inch

Appendix 1: Title of the Appendix 1

Appendix 2

Title of the Appendix 2

Appendix 2: Title of the Appendix 2

Background of the student

- Title “**Background of the student**”
 - Font type: Times New Roman; Font size: 15; Font style: **Bold**;
Alignment: Centered
 - Paragraph Line Spacing: 1.5 lines
- Content
 - Font type: Times New Roman; Font size: 12; Font style: Regular;
Alignment: Justified
 - Paragraph Line Spacing: 1.5 lines
- Page number:
 - Font type: Times New Roman; Font size: 10 or 11; Font style: Regular
 - Arabic page number (1, 2, 3 and so on) at the bottom of the page;
Alignment: Left
- Page margin: Left – 1.5 inch; Right, top & bottom – 1 inch

Reference

- Title “**Reference**”
 - Font type: Times New Roman; Font size: 15; Font style: **Bold**;
 - Alignment: Centered
 - Paragraph Line Spacing: 1.5 lines
- Content (in English)
 - Font type: Times New Roman; Font size: 12; Font style: Regular
 - Paragraph: Indentation---Hanging = 1.27; Spacing --- after 12 pt.; Line spacing --- Single
 - Alphabetical order
- Content (in Thai)
 - Font type: Angsana UPC/New; Font size: 14; Font style: Regular;
 - Paragraph Line Spacing: 1.5 lines
 - Paragraph: Indentation---Hanging = 1.27; Spacing --- after 12 pt.; Line spacing --- Single
- Page number:
 - Font type: Times New Roman; Font size: 10 or 11;
 - Font style: Regular Arabic page number
- Page margin: Left – 1.5 inch; Right, top & bottom – 1 inch

Daniels, J., Radebaugh, L. & Sullivan, D. (2015). *International Business: Environments and Operations* (15th ed.). Pearson.

Kimberley, N. & Crosling, G. (2012). *Q Manual*. Retrieved March 3, 2022, from https://www.monash.edu/_data/assets/pdf_file/0005/506345/qmanual.pdf, p. 69-80.

Peng, M. W., & Meyer, K. (2019). *International Business* (3rd ed.). Cengage Learning EMEA

Wild, J. J., & Wild, K. L. (2016). *International Business: The Challenges of Globalization* (8th ed.). Pearson.

บัณฑิตวิทยาลัย จุฬาลงกรณ์มหาวิทยาลัย. (2555). *สิ่งพิมพ์ วิทยานิพนธ์ การคัดลอกผลงานวิจัย “ประเด็นสำคัญที่ควรรู้”* 11 มิถุนายน 2558. แหล่งที่มา <http://www.macorin.psu.ac.th/DownloadPDF/Plagiarism.pdf>